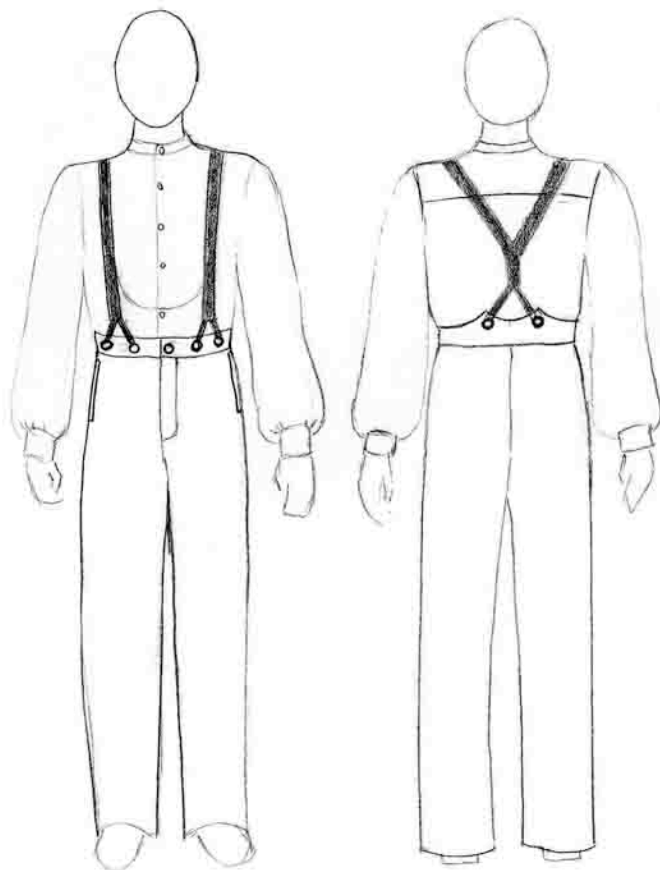


Men's Trousers 1860-1900



Features:

- * *Choice of fabric selection: wools, linens, silk blends*
- * *High-waist cut to be worn with suspenders*
- * *Six suspender buttons*
- * *Button fly front closure*
- * *Side pockets*
- * *Optional size adjuster on back*
- * *All button holes machined - hand worked buttonholes optional*

Prices are dependent upon style, size, and material selection. Call for quote.



www.denisenadinedesign.com

(719) 592-1648

February 15, 2005

Day Waistcoat Styles



Step collar



Shawl collar

Waistcoats (Vests)

Features:

- * *Pearl, shell, metal or wood buttons*
- * *Historically accurate cut*
- * *Variety of fabrics available including silk brocade, wool, cotton, linen*
- * *Movie-style old west version available*



**Evening Dress
Waistcoat
Low cut shawl collar
Two pockets**

Note: Evening waistcoats worn with and evening dress coat should be white or black silk. If worn with a frock coat may be colored.